

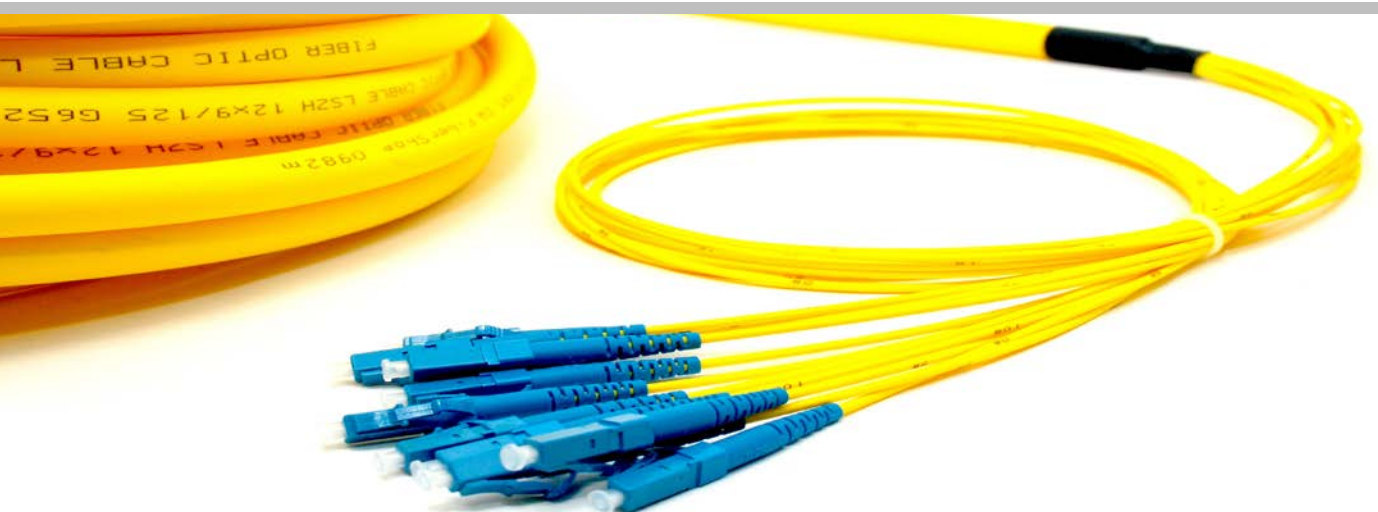


Fiber Optics

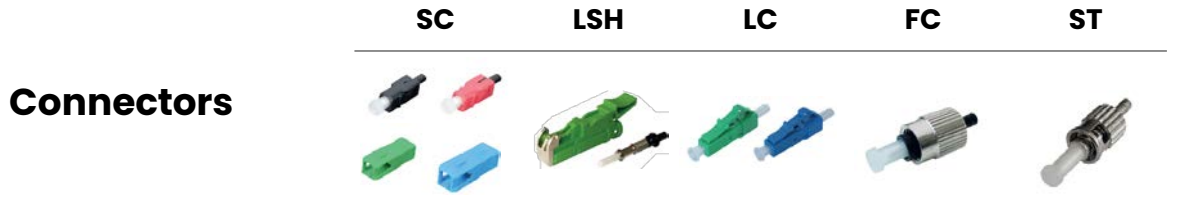
You customize it,  
we produce it!

## Multifiber Optic Cables

### Product Information

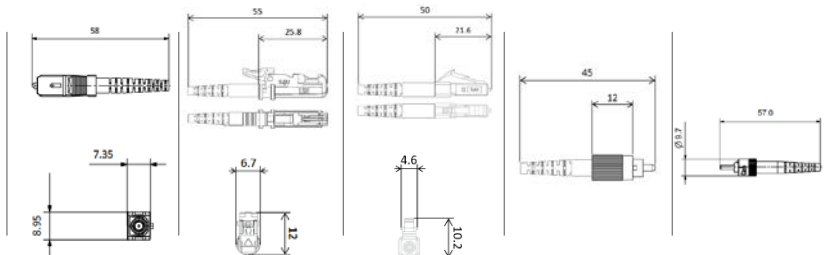


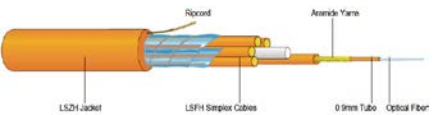
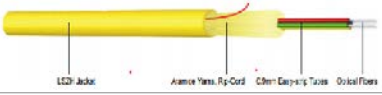
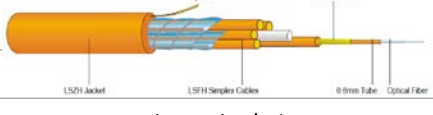
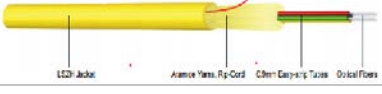
- ✓ Breakout cable with all variants of connectors: SC, LC, LSH (E2000), FC and ST
- ✓ Fiber types: G652D, G657A1 / A2, OM1, OM3, OM4
- ✓ Premium connectors of quality class Grade B
- ✓ Simplex cable types, with tight buffer fibers and aramid yarns as strain relief
- ✓ Available in lengths between 0,5 to 50m in any cable type
- ✓ Low smoke, Zero Halogen, Flame retardant cables jackets
- ✓ Singlemode breakout cable and Multimode breakout cable are tested by 100% in Insertion loss and Return loss. An interferometer measurement can be done in additional.
- ✓ The labeling can be customized according to customer special needs



Compliance	IEC 61754, TIA 604, RoHS				
Alignment technology	full ceramic ferrule (Zirconia ZrO2)				
Ferrule Diameter	2,5mm	2,5mm	1,25mm	2,5mm	2,5mm
Operating Temperature	-40°C to +85°C				
Flammability	UL94 V-0				
Durability	IEC 61300-2-2, > 1000 mating cycles				
Fiber, cable retention	IEC 61300-2-4; 100N on 2.0mm cables				
Static side load	IEC 61300-2-42; 5N on 2.0mm cables				
Flexing of strain relief	IEC 61300-2-44, 5N on 100 bending cycles				
Insertion loss, fiber core tunability	IEC 61755-3-1 / IEC 61755-3-2, Grade B, 0.25dB on 97% PREMIUM Version: 0.15dB on 97%				
Return loss	APC > 65dB, UPC > 50dB, MM > 35dB				
Housing	Plastic		Brass, nickel plated		
Housing color	SM APC 8°	Green	-	-	-
	SM UPC	Blue	-	-	-
	MM	Grey, aqua, magenta	Black, beige	Black, beige	-

Technical drawing



Cables	Singlemode			Multimode		
	G.652D/ G657A1	G.657A 2	OM1	OM2	OM3	OM4
<b>Breakout Cable 12FO</b>						
	✓	✓	✓	✓	✓	✓
Fiber	Color: same as tube					
Inner Jacket	Easy Strip / 0,87 ± 0,05 mm / color: same as jacket / 2,0mm LSZH Jacket 1,7±0,1mm					
Outer diameter / Cable weight	11,5 ± 0,5 mm / 128 kg/km					
<b>Riser Cable 12FO</b>						
	✓	✓	✓	✓	✓	✓
Fiber	Not colored					
Inner Jacket	Tight tube / 0,87 ± 0,05 mm / colors: EIA/TIA 598					
Outer diameter / Cable weight	6,8 ± 0,3 mm / 37 kg/km					
<b>Breakout Cable 24FO</b>						
	✓	✓	✓	✓	✓	✓
Fiber	Not colored					
Inner Jacket	Tight tube / 0,57 ± 0,05 mm / color white / 1,7mm LSZH Jacket 1,7±0,1mm					
Outer Diameter / Cable weight	12,5 ± 0,5 mm / 140 kg/km					
<b>Riser Cable 24FO</b>						
	✓	✓	✓	✓	✓	✓
Fiber	Not colored					
Inner Jacket	Tight tube / 0,87 ± 0,05 mm / colors: EIA/TIA 598					
Outer diameter / Cable weight	7,8 ± 0,5 mm / 61 kg/km					
Jacket color	yellow	yellow	orange	orange	aqua	violet
Temperature range	IEC 60794-2-10 -20° to 70° C					
Tensile load (B) Breakout / (R) Riser	IEC 60794-1-2-E1 1200 N(B)/600 N(R) for 12FO / 1800 N(B) 720 N(R) for 24FO					
Crush resistance	IEC 60794-1-2-E3 1000 N for 12FO / 1000 N for 24FO					
Materials	2011/65/EC (RoHS 2) compliant					
Fire Behaviour	Zero Halogens / Corrosive gases according to IEC 60754-1/-2 Flame retardant according to IEC 60332-1 / IEC 60332-3-24 Smoke emission according to IEC 61034-1/-2					
CPR Classification	EN 50575 / EN 13501-6:2014			Dca-s2-dl-a2		

<b>Fiber Optics</b>		G.652D/ G657A1	G.657A2	OM1	OM2	OM3	OM4
Fiber attenuation (dB/km)	@850nm			≤4		≤2,4	
	@1300			≤2		≤0,6	
	@1310		≤0,30				
	@1550		≤0,17				
	@1625		≤0,20				
Fiber Structure (μm)			9/125	62,5/125		50/125	

**Additional Information:**

The production of YelcoFiberoptics will be done according to your specifications. The resulting product cannot be either returned or replaced. The possible combinations to produce are available on the configurator at YelcoFiberoptics.tech.

If you have specific needs that cannot be set with the configurator, contact us directly at YelcoFiberoptics.tech.